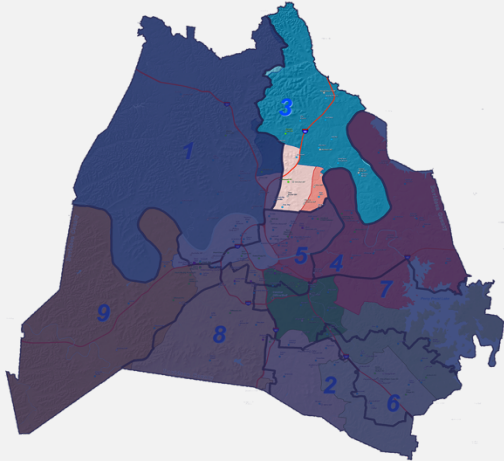


# District 3: North Nashville

8,748 TOTAL STUDENTS

Students in Traditional Schools: 98% | Charter Schools: 2%



### Elementary Schools

Amqui Elementary School; Chadwell Elementary School; Dan Mills Elementary School; Gateway Elementary School; Goodlettsville Elementary School; Old Center Elementary School; Smithson Craighead Academy (Charter); Stratton Elementary School; Tom Joy Elementary School

### Middle Schools

Goodlettsville Middle School; Gar-Mar Middle School; Isaac Middle School; Jere Baxtor Middle School; Madison Middle School

### High Schools

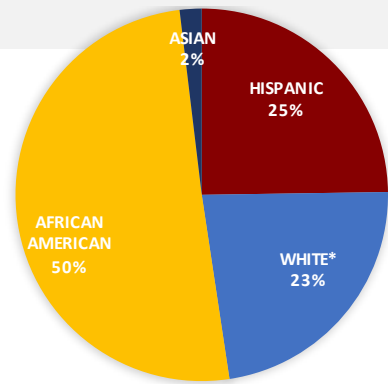
Hunter's Lane High School; Maplewood High School

### Summary of Academic & Demographic Data

- Has the second highest percentage of economically disadvantaged students in MNPS
- Has the highest percentage of chronically absent children (missing 10 days or more)
- ACT scores are one of the lowest in MNPS

### Student Demographics

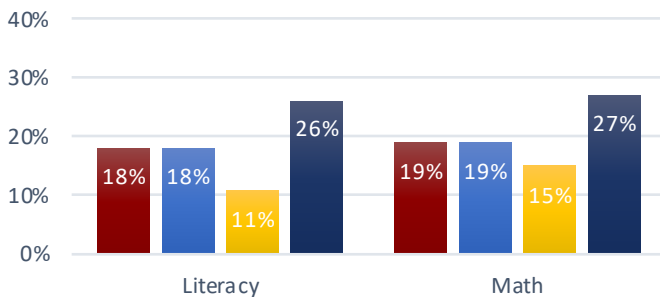
*\*White often includes Middle Eastern and North African (MENA)*



	District 3	District 3: Traditional Schools	District 3: Charter School	All MNPS
ENGLISH LANGUAGE LEARNERS %	16%	16%	25%	19%
STUDENTS WITH DISABILITIES %	15%	15%	13%	13%
ECONOMICALLY DISADVANTAGED %	60%	60%	68%	51%

### Achievement Scores

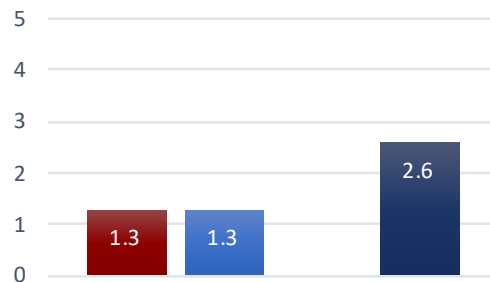
Percentage of Students Considered "On Track" or "Mastered" on TNReady Scale of 1-100% for Elementary and Middle Schools Only



■ District 3    
 ■ District 3: Traditional    
 ■ District 3: Charter    
 ■ All MNPS

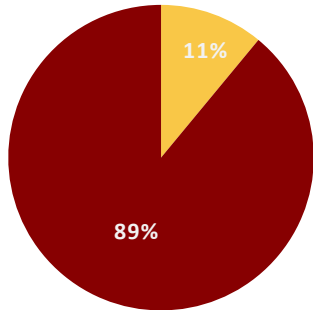
### Growth Scores

Average Score Measured by TVAAS Scale of 1-5 for Middle and High Schools Only



**COLLEGE READINESS | High School ACT Data**

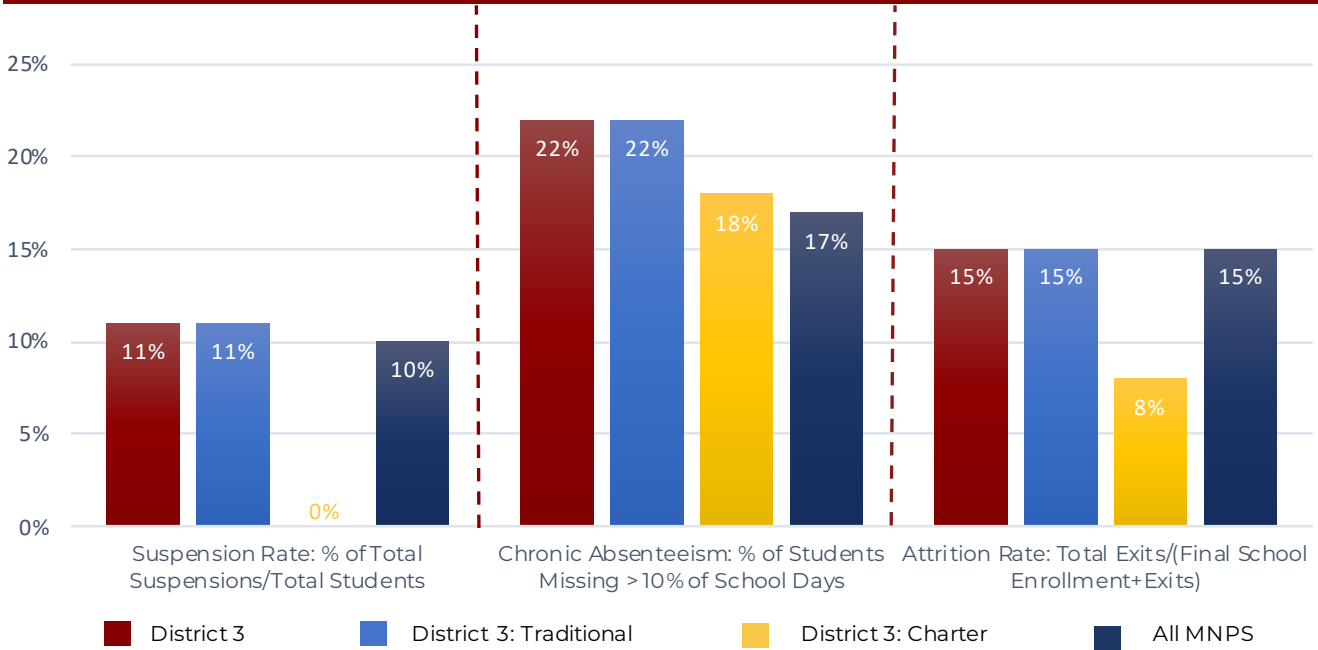
Students are considered "College Ready" if they score a 21 or above on the ACT exam.



- Students Scoring a 21+
- Students Scoring Below a 21

	"College Ready"	Average ACT Score	Graduation Rate
Hunter's Lane High School	15%	16.5	80%
Maplewood High School	7%	16	79%
All MNPS	23%	19	80%

**STUDENT CULTURE DATA**



**TEACHER DATA**

	District 3	MNPS Traditional Schools
Teacher Annual Retention (2-year average)	73%	77%
Teacher Attendance Rate (2016-2017 only)	93%	93%
Average Years Principal Has Served in Role	3.6	4

For additional information on District 3, visit <https://www.mnps.org/district-3>

Data Notes: "All MNPS" includes charter and district-managed schools. There are no charter middle or high schools in this district, so no charter growth scores are available.