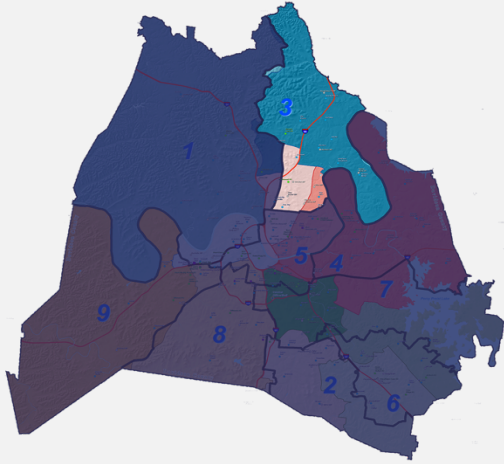


District 3: North Nashville

8,748 TOTAL STUDENTS

Students in Traditional Schools: 98% | Charter Schools: 2%



Elementary Schools

Amqui Elementary School; Chadwell Elementary School; Dan Mills Elementary School; Gateway Elementary School; Goodlettsville Elementary School; Old Center Elementary School; Smithson Craighead Academy (Charter); Stratton Elementary School; Tom Joy Elementary School

Middle Schools

Goodlettsville Middle School; Gar-Mar Middle School; Isaac Middle School; Jere Baxtor Middle School; Madison Middle School

High Schools

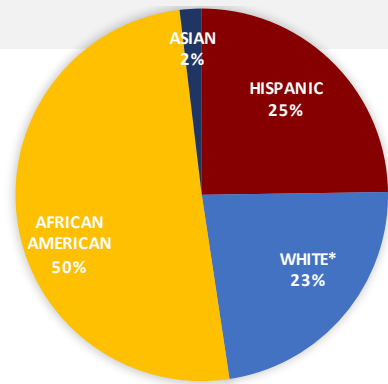
Hunter's Lane High School; Maplewood High School

Summary of Academic & Demographic Data

- Has the second highest percentage of economically disadvantaged students in MNPS
- Has the highest percentage of chronically absent children (missing 10 days or more)
- ACT scores are one of the lowest in MNPS

Student Demographics

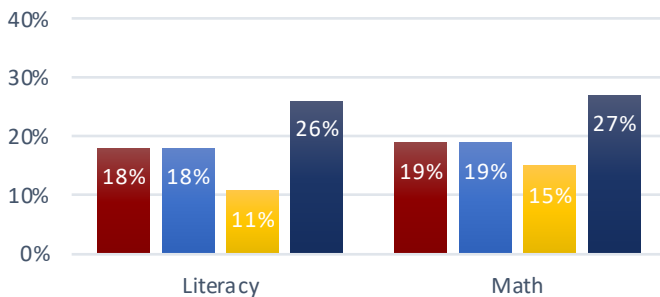
*White often includes Middle Eastern and North African (MENA)



	District 3	District 3: Traditional Schools	District 3: Charter School	All MNPS
ENGLISH LANGUAGE LEARNERS %	16%	16%	25%	19%
STUDENTS WITH DISABILITIES %	15%	15%	13%	13%
ECONOMICALLY DISADVANTAGED %	60%	60%	68%	51%

Achievement Scores

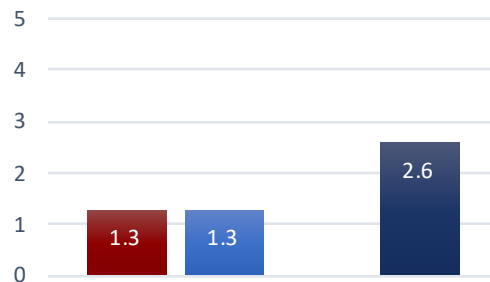
Percentage of Students Considered "On Track" or "Mastered" on TNReady Scale of 1-100% for Elementary and Middle Schools Only



■ District 3
 ■ District 3: Traditional
 ■ District 3: Charter
 ■ All MNPS

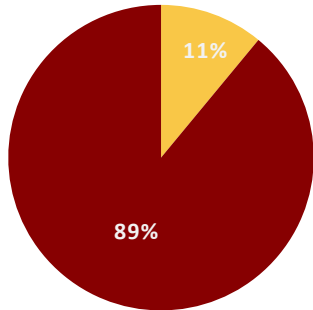
Growth Scores

Average Score Measured by TVAAS Scale of 1-5 for Middle and High Schools Only



COLLEGE READINESS | High School ACT Data

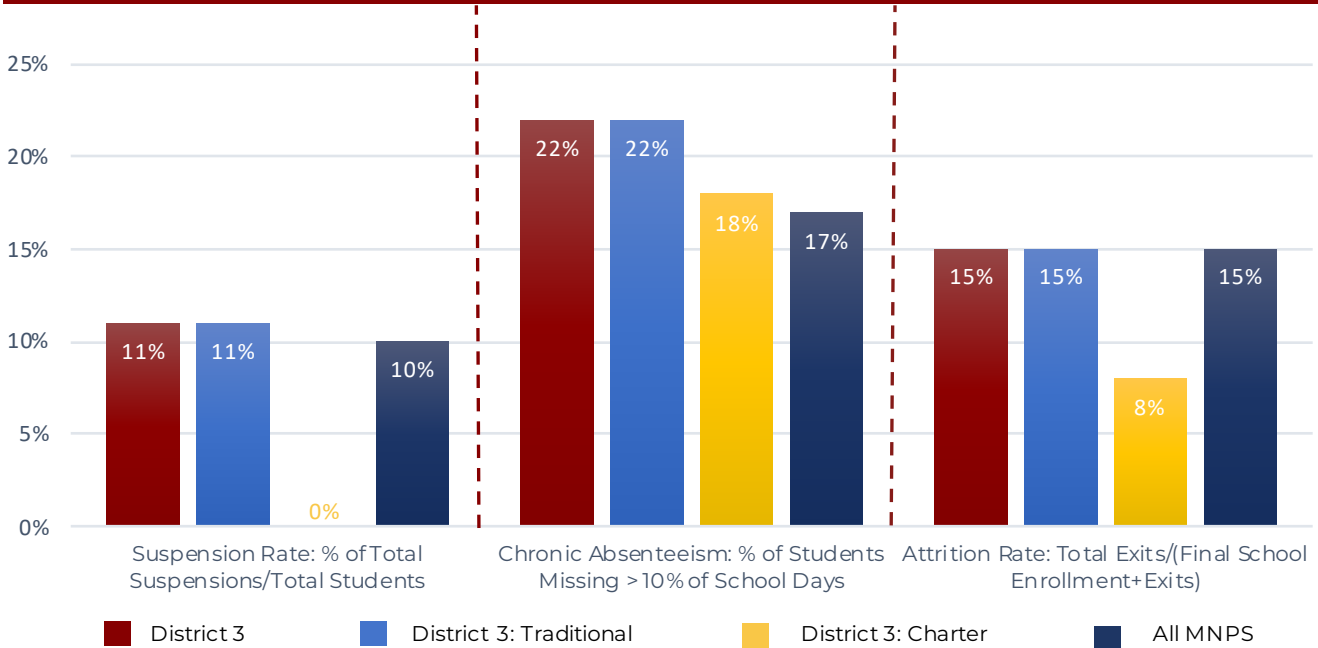
Students are considered "College Ready" if they score a 21 or above on the ACT exam.



■ Students Scoring a 21+
■ Students Scoring Below a 21

	"College Ready"	Average ACT Score	Graduation Rate
Hunter's Lane High School	15%	16.5	80%
Maplewood High School	7%	16	79%
All MNPS	23%	19	80%

STUDENT CULTURE DATA



TEACHER DATA

	District 3	MNPS Traditional Schools
Teacher Annual Retention (2-year average)	73%	77%
Teacher Attendance Rate (2016-2017 only)	93%	93%
Average Years Principal Has Served in Role	3.6	4

For additional information on District 3, visit <https://www.mnps.org/district-3>

Data Notes: "All MNPS" includes charter and district-managed schools. There are no charter middle or high schools in this district, so no charter growth scores are available.

MNPS School Board District Summaries

DATA SOURCES, CALCULATIONS AND NOTES

DATA TIMEFRAME

- 1) All student data, including enrollment and academic data, is from the 2016-2017 academic year. The "Average Years Principal has Served in Role" data also includes 2017-2018 data.

DEFINITIONS

- 1) "All MNPS" and "TN" labels include data for traditional schools as well as magnet schools, Alternative Learning Centers (ALCs), Adult Learning Centers, non-traditional schools, and charter schools.
- 2) "MNPS Traditional Schools" includes schools managed by MNPS, excluding charter schools, academic magnet schools with testing requirements*, Alternative Learning Centers (ALCs), Adult Learning Centers, and non-traditional schools.

*Academic Magnets with testing requirements include

- Meigs Middle School (grades 5-8)
- M. L. King Junior High School (grades 7-12)
- Hume-Fogg High School (grades 9-12)
- Middle College High School (grade 9-12)

Additional note: Nashville's two Achievement School District charter schools, LEAD Neely's Bend and LEAD Brick Church, are not included in this report and excluded from all charter and MNPS calculations.

- 3) The benchmark "College Ready" is set by the ACT, which identifies students who have a 50% chance of getting a B or higher and a 75% chance of receiving a C or higher in a corresponding credit-bearing, first year college course. Students are considered "college ready" if they score a composite ACT score of 21 or above. A composite ACT score represents an average of the four core testing subjects (English, Math, Reading, Science).

ACADEMIC DATA SOURCES

- 1) TNReady: TNReady achievement data sets were provided by the Tennessee Department of Education. Data for individual schools can be found on the State Report Card at <https://www.tn.gov/education/data/report-card.html>.
- 2) TVAAS: TVAAS growth data sets were provided by the Tennessee Department of Education. The full data set can be found here: https://www.tn.gov/content/dam/tn/education/data/TVAAS_School_Composites_2017.xlsx

STUDENT DATA SOURCES & CALCULATIONS

- 1) Suspensions: Suspension data sets were sourced from the Tennessee Department of Education. The full data set can be found here: https://www.tn.gov/content/dam/tn/education/data/data_discipline_2016-17.xlsx
- 2) Chronic Absenteeism: This calculation is the percentage of students missing more than 10% of school days. The percentage was calculated by MNPS and sourced from the MNPS Data Warehouse.
- 3) Enrollment: Enrollment numbers were pulled from the MNPS Data Warehouse Student Attrition spreadsheet.
- 4) Demographics: Information on student race, English Language Learners (ELL), Free and Reduced Lunch (FRL) and special education (SPED) was sourced from the Tennessee Department of Education

Profile Data Files on their public website. The full data set can be found here:

https://www.tn.gov/content/dam/tn/education/data/data_2016-17_school_profile.xlsx

- 5) Student Attrition: The data sets to calculate attrition rates were sourced from the MNPS Data Warehouse. The calculation used to determine attrition =

$$\frac{\text{Total Number of Exits}}{(\text{End of Year Enrollment} + \text{Total Exits})}$$

TEACHER HR DATA

Teacher annual retention data were provided by MNPS for all MNPS-managed schools. Teacher HR data for charter schools were not included in the District reports, however self-reported data was included in charter school reports when possible.

UNAVAILABLE DATA

At times, datasets for all schools were not available on the TN Report Card or the MNPS Data Warehouse. All category calculations include schools that have available data for that metric. A list of schools which were excluded from each category is included on each District Summary page.